



Account Number: **5152 704 8078**

Statement Date: 05/14/20

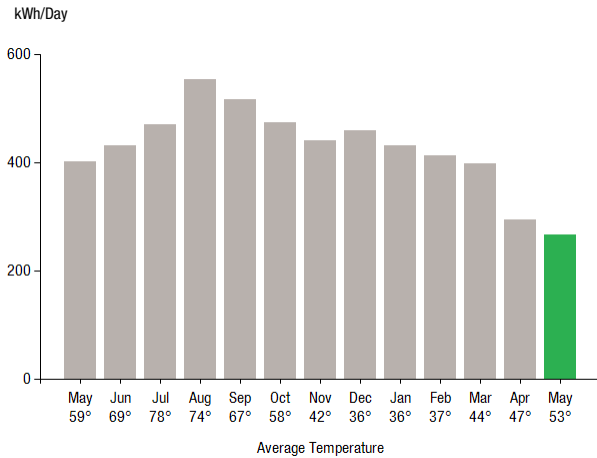
Service Provided To:
WILTON PROPERTIES RSK LLC

Total Amount Due
by 06/11/20

\$1,388.12

Amount Due On 05/11/20	\$4,076.84
Last Payment Received On 05/01/20	-\$4,076.84
Balance Forward	\$0.00
Total Current Charges	\$1,388.12

Electric Usage History - Kilowatt Hours (kWh)



Current Charges for Electricity

Supply

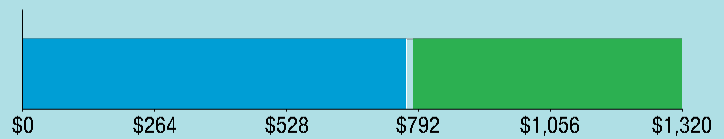
\$768.32

Cost of electricity from
Eversource

Delivery

\$545.87

Cost to deliver electricity
from Eversource



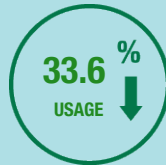
Your electric supplier is

Eversource
PO Box 270
Hartford, CT 06141-0270

Electric Usage Summary

This month your
average daily
electric use was
267.0 kWh

This month you used
33.6% less
than at the
same time last year



News For You

For ways to reduce your home's overall energy consumption, check out Eversource's free Energy Savings Plan tool on Eversource.com under Save Energy & Money.

Remit Payment To: Eversource, PO Box 56002, Boston, MA 02205-6002

CE_200514PROD.TXT



Account Number: **5152 704 8078**

Please make your check payable to Eversource and consider adding \$1 for Operation Fuel.

To add more or make a payment today, visit Eversource.com. If mailing, please allow up to 5 business days to post.

Total Amount Due
by 06/11/20

\$1,388.12

Amount Enclosed

WILTON PROPERTIES RSK LLC
C/O NE INVESTMENT PARTNERS
STE 2007
470 WEST AVE
STAMFORD CT 06902-6359

Eversource
PO Box 56002
Boston, MA 02205-6002

5152704807847 0001388123 0001388123



Account Number: **5152 704 8078**

Customer name key: WILT

Statement Date: 05/14/20

Service Provided To:
WILTON PROPERTIES RSK LLC

Svc Addr: 59 DANBURY RD
WILTON CT 06897

Serv Ref: 412622000

Bill Cycle: 09

Service from 04/13/20 - 05/13/20

30 Days

Next read date on or about: Jun 12, 2020

Meter Number	Current Read	Previous Read	Current Usage	Reading Type
892333192	10315	10265	50	Actual

Total Demand Use = 17.00 kW

50 X Meter Constant of 160 = 8,000 Billed Usage

Monthly kWh Use

May	Jun	Jul	Aug	Sep	Oct	Nov
13280	12960	15040	16640	15520	13280	14080
Dec	Jan	Feb	Mar	Apr	May	
13760	14240	12000	11520	9440	8000	

Contact Information

Emergency: 800-286-2000

www.eversource.com

BusinessCenterCT@eversource.com

Pay by Phone: 888-783-6618

Customer Service: 888-783-6617

Total Amount Due
by 06/11/20

\$1,388.12

Electric Account Summary

Amount Due On 05/11/20	\$4,076.84
Last Payment Received On 05/01/20	-\$4,076.84
Balance Forward	\$0.00
Current Charges/Credits	
Electric Supply Services	\$768.32
Delivery Services	\$545.87
Other Charges or Credits	\$73.93
Total Current Charges	\$1,388.12
Total Amount Due	\$1,388.12

Total Charges for Electricity

Supplier

Eversource

Service Reference: 412622000

Allocated for 04/13/20 to 04/30/20

Generation Srvc Chrg** 4533.60kWh X \$0.09604 \$435.41

Allocated for 04/30/20 to 05/13/20

Generation Srvc Chrg** 3466.40kWh X \$0.09604 \$332.91

Subtotal Supplier Services \$768.32

Delivery

(DISTRIBUTION RATE: 030)

Service Reference: 412622000

Allocated for 04/13/20 to 04/30/20

Transmission Dmd Chrg 15.00KW X \$6.74000 X 0.56670 \$57.29

Distr Cust Srvc Chrg \$44.0000 X 0.56670 \$24.93

Electric Sys Improvements*** 15.00KW X \$0.82000 X 0.56670 \$6.97

Distribution Dmd Chrg 15.00KW X \$13.98000 X 0.56670 \$118.84

Revenue Adj Mechanism 4533.60kWh X \$-0.00011 -\$0.50

CTA Demand Chrg 15.00KW X \$-0.06000 X 0.56670 -\$0.51

FMCC Delivery Chrg 4533.60kWh X \$0.01412 \$64.01

Comb Public Benefit Chrg* 4533.60kWh X \$0.00801 \$36.31

CE_200514PROD.TXT

Explanation of your charges

*The Combined Public Benefits Charge represents a combination of three charges formerly known as: Conservation and Load Mgmt Charge, Renewable Energy Investment Charge, and Systems Benefits Charge. This charge also includes the Conservation Adjustment Mechanism approved by the Public Utilities Regulatory Authority in Docket No. 13-11-14.

**Effective January 1, 2007, the Generation Services Charge (GSC) and the Bypassable Federally Mandated Congestion Charge (BFMCC) have been combined into the "GSC Charge" listed in the Supplier Services section of your bill. The GSC reflects all of the cost of procuring energy from Eversource wholesale suppliers. The BFMCC portion of this line item is -\$0.00040 / kWh. If you multiply this BFMCC rate by the number of kWhs on your bill, you can calculate the dollar amount associated with the BFMCC.

***Electric System Improvements: Recovers company investments that protect, strengthen or modernize the electric grid.

EVERSOURCE

Account Number: **5152 704 8078**

Customer name key: WILT

Statement Date: 05/14/20

Service Provided To:
WILTON PROPERTIES RSK LLC

Total Amount Due
by 06/11/20

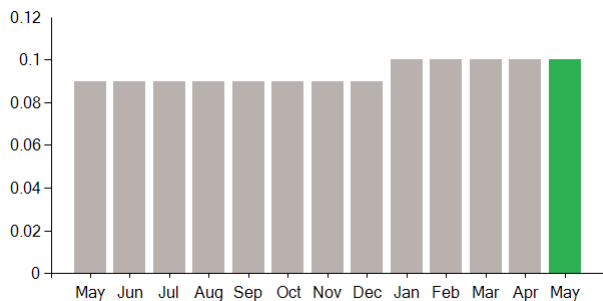
\$1,388.12

Continued from previous page...

Continued from previous page...

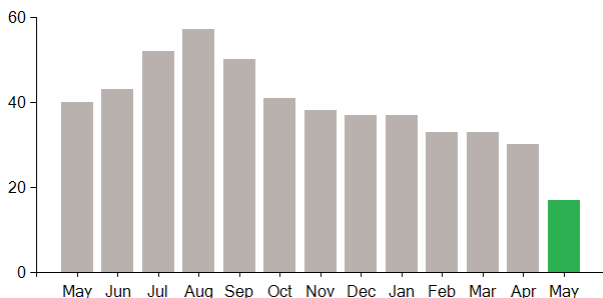
Supply Rate

Dollars / kWh



Demand Profile

Max. Demand



Important Messages About Your Account

Because the billing period spans a change in the rates, your usage has been calculated partly on the old rate and partly on the new rate.

Thank you for participating in the Online Bill and Payment Service.

Allocated for 04/30/20 to 05/13/20

Transmission Dmd Chrg	15.00KW X \$6.74000 X 0.43330	\$43.81
Distr Cust Srvc Chrg	\$44.0000 X 0.43330	\$19.07
Electric Sys Improvements***	15.00KW X \$0.82000 X 0.43330	\$5.33
Distribution Dmd Chrg	15.00KW X \$14.52000 X 0.43330	\$94.37
Revenue Adj Mechanism	3466.40kWh X \$-0.00011	-\$0.38
CTA Demand Chrg	15.00KW X \$-0.06000 X 0.43330	-\$0.39
FMCC Delivery Chrg	3466.40kWh X \$0.01412	\$48.95
Comb Public Benefit Chrg*	3466.40kWh X \$0.00801	\$27.77
Subtotal Delivery Services		\$545.87
Total Cost of Electricity		\$1,314.19

Other Charges or Credits

6.35% CT Sales Tax after Exemption of \$150.00

CT Sales Tax Supplier	\$48.79
CT Sales Tax Delivery	\$25.14
Subtotal Other Charges or Credits	\$73.93

Total Current Charges

\$1,388.12