



Account Number: **5152 704 8078**

Statement Date: 01/18/23

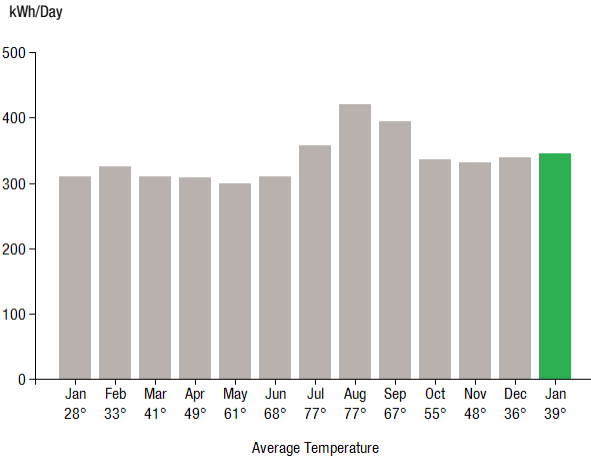
Service Provided To:
WILTON PROPERTIES RSK LLC

Payment will be sent to bank
for processing on 02/10/23

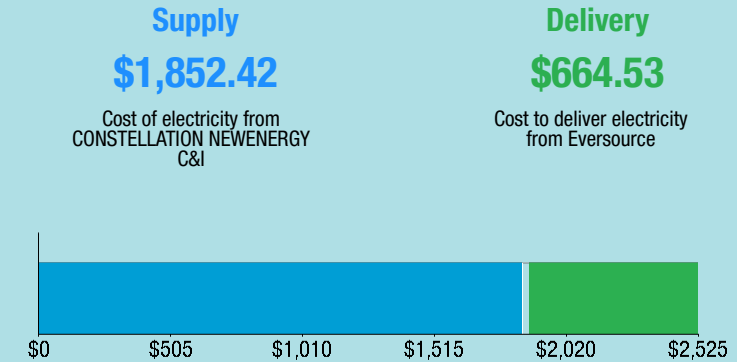
\$2,667.25

Amount Due On 01/12/23	\$1,905.09
Last Payment Received On 01/09/23	-\$1,905.09
Balance Forward	\$0.00
Total Current Charges	\$2,667.25

Electric Usage History - Kilowatt Hours (kWh)



Current Charges for Electricity



Your electric supplier is

CONSTELLATION NEWENERGY C&I
1001 LOUISIANA ST
STE 2300
HOUSTON TX 77002-5089
844-636-3749

Electric Usage Summary

This month your
average daily
electric use was
346.0 kWh

This month you used
11.6% more
than at the
same time last year



News For You

Beginning Jan.1, if you've chosen Eversource as your energy supplier, the Standard Service supply rate will increase. How much you pay will depend on how much energy you use and weather conditions. To learn about the programs we offer to help manage your energy use and help you pay your bill this winter, visit Eversource.com/winter-bill.

Remit Payment To: Eversource, PO Box 56002, Boston, MA 02205-6002

CE_230118PROD.TXT



Account Number: **5152 704 8078**

Non-residential and residential non-hardship customers may be subject to a 1.00% late payment charge if the "Total Amount Due" is not received by 02/15/23.

WILTON PROPERTIES RSK LLC
C/O NE INVESTMENT PARTNERS
STE 2007
470 WEST AVE
STAMFORD CT 06902-6359

Please make your check payable to Eversource and consider adding \$1 for Operation Fuel.

To add more or make a payment today, visit Eversource.com. If mailing, please allow up to 5 business days to post.

Payment will be sent to bank
for processing on 02/10/23

\$2,667.25

Amount Enclosed

Eversource
PO Box 56002
Boston, MA 02205-6002

5152704807847 0002667258 0002667258

EVERSOURCE

Account Number: **5152 704 8078**

Customer name key: WILT

Statement Date: 01/18/23

Service Provided To:
WILTON PROPERTIES RSK LLC

Svc Addr: 59 DANBURY RD
WILTON CT 06897

Serv Ref: 412622000

Bill Cycle: 09

Service from 12/13/22 - 01/13/23

31 Days

Next read date on or about: Feb 10, 2023

Meter Number	Current Read	Previous Read	Current Usage	Reading Type
892333192	12528	12461	67	Actual

Total Demand Use = 25.30 kW

67 X Meter Constant of 160 = 10,720 Billed Usage

Monthly kWh Use

Jan	Feb	Mar	Apr	May	Jun	Jul
9600	9440	9600	8960	9280	9920	10720
Aug	Sep	Oct	Nov	Dec	Jan	
13440	11840	9760	9280	11200	10720	

Contact Information

Emergency: 800-286-2000

www.eversource.com

Pay by Phone: 888-783-6618

Customer Service: 888-783-6617

Payment will be sent to bank
for processing on 02/10/23

\$2,667.25

Electric Account Summary

Amount Due On 01/12/23	\$1,905.09
Last Payment Received On 01/09/23	-\$1,905.09
Balance Forward	\$0.00
Current Charges/Credits	
Electric Supply Services	\$1,852.42
Delivery Services	\$664.53
Other Charges or Credits	\$150.30
Total Current Charges	\$2,667.25
Total Amount Due	\$2,667.25

Total Charges for Electricity

Supplier

CONSTELLATION NEWENERGY

Service Reference: 412622000

Generation Srvc Chrg** 10720.00kWh X \$0.17280 \$1,852.42

Subtotal Supplier Services \$1,852.42

Delivery

(DISTRIBUTION RATE: 030)

Service Reference: 412622000

Transmission Dmd Chrg 23.30KW X \$9.36000 \$218.09

Distr Cust Srvc Chrg \$44.00

Distribution Dmd Chrg 23.30KW X \$14.22000 \$331.33

Electric Sys Improvements*** 23.30KW X \$1.86000 \$43.34

Revenue Adj Mechanism 10720.00kWh X \$0.00192 \$20.58

CTA Demand Chrg 23.30KW X \$-0.11000 -\$2.56

FMCC Delivery Chrg 4495.50kWh X \$-0.01500 -\$67.43

Comb Public Benefit Chrg* 10720.00kWh X \$0.00720 \$77.18

Subtotal Delivery Services \$664.53

Total Cost of Electricity \$2,516.95

Other Charges or Credits

CE_230118PROD.TXT

*The Combined Public Benefits Charge represents a combination of three charges formerly known as: Conservation and Load Mgmt Charge, Renewable Energy Investment Charge, and Systems Benefits Charge. This charge also includes the Conservation Adjustment Mechanism approved by the Public Utilities Regulatory Authority in Docket No. 13-11-14.

**Effective January 1, 2007, the Generation Services Charge (GSC) and the Bypassable Federally Mandated Congestion Charge (BFMCC) have been combined into the "GSC Charge" listed in the Supplier Services section of your bill. The GSC reflects all of the cost of procuring energy from Eversource wholesale suppliers. The BFMCC portion of this line item is -\$0.0015 / kWh. If you multiply this BFMCC rate by the number of kWhs on your bill, you can calculate the dollar amount associated with the BFMCC.

***Electric System Improvements: Recovers company investments that protect, strengthen or modernize the electric grid.



Account Number: 5152 704 8078

Customer name key: WILT

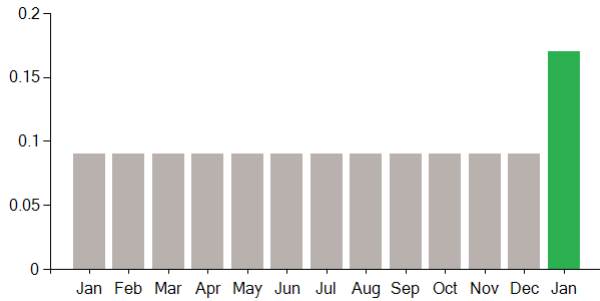
Statement Date: 01/18/23

Service Provided To:
WILTON PROPERTIES RSK LLC

Continued from previous page...

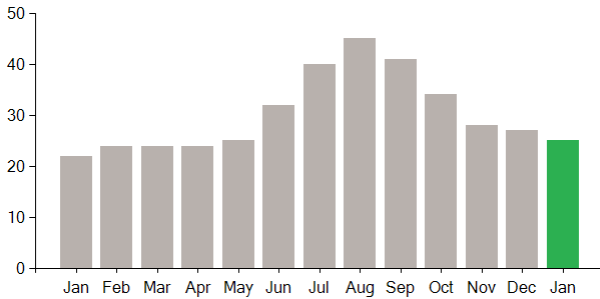
Supply Rate

Dollars / kWh



Demand Profile

Max. Demand



Important Messages About Your Account

Please note: Payment processes differ for each bank. Therefore, it may take longer than the date that appears on your bill for the funds to be deducted from your bank account.

Thank you for your payments during 2022. We look forward to serving you in 2023.

Because the billing period spans a change in the rates, your usage has been calculated partly on the old rate and partly on the new rate.

Payment will be sent to bank
for processing on 02/10/23

\$2,667.25

Continued from previous page...

6.35% CT Sales Tax after Exemption of \$150.00

CT Sales Tax Supplier \$117.63

CT Sales Tax Delivery \$32.67

Subtotal Other Charges or Credits \$150.30

Total Current Charges

\$2,667.25