



Account Number: **5152 704 8078**

Statement Date: 12/15/22

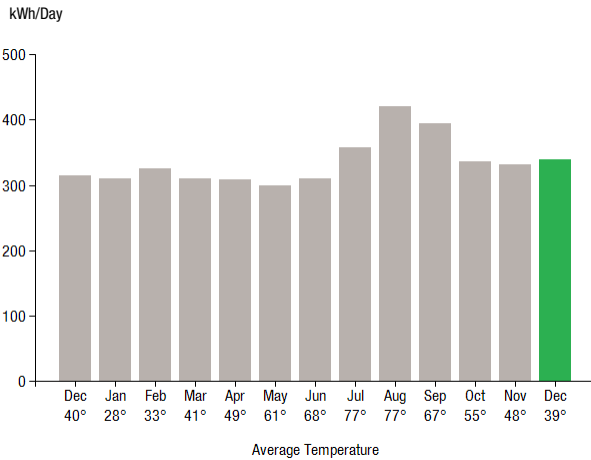
Service Provided To:  
WILTON PROPERTIES RSK LLC

Payment will be sent to bank  
for processing on 01/07/23

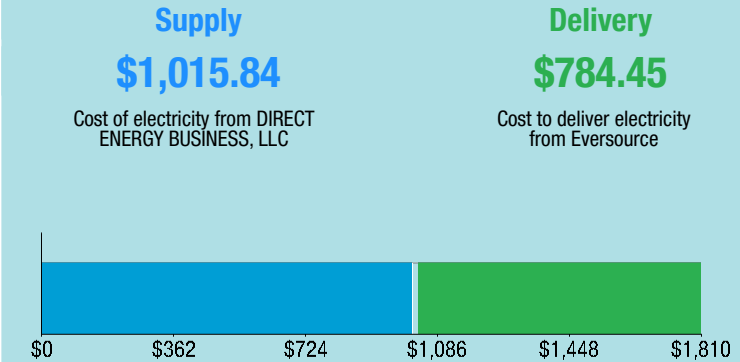
**\$1,905.09**

Amount Due On 12/13/22	\$1,744.39
Last Payment Received On 12/08/22	-\$1,744.39
Balance Forward	\$0.00
Total Current Charges	\$1,905.09

### Electric Usage History - Kilowatt Hours (kWh)



### Current Charges for Electricity



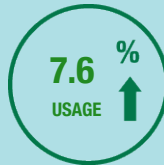
#### Your electric supplier is

DIRECT ENERGY BUSINESS, LLC  
1001 LIBERTY AVE  
PITTSBURGH PA 15222-3714  
888-925-9115

### Electric Usage Summary

This month your  
average daily  
electric use was  
**339.0 kWh**

This month you used  
**7.6% more**  
than at the  
same time last year



### News For You

We know you count on us every day for the energy you need to keep warm. We offer programs to help you manage your energy bills. If you or someone you know is struggling to keep up with energy bills, even if you never have before, connect with us to get assistance. There is a plan for everyone. Visit [Eversource.com/billhelp](https://Eversource.com/billhelp).

Remit Payment To: Eversource, PO Box 56002, Boston, MA 02205-6002

CE\_221215PROD.TXT



Account Number: **5152 704 8078**

Non-residential and residential non-hardship customers may be subject to a 1.00% late payment charge if the "Total Amount Due" is not received by 01/12/23.

WILTON PROPERTIES RSK LLC  
C/O NE INVESTMENT PARTNERS  
STE 2007  
470 WEST AVE  
STAMFORD CT 06902-6359

Please make your check payable to Eversource and consider adding \$1 for Operation Fuel.

To add more or make a payment today, visit [Eversource.com](https://Eversource.com). If mailing, please allow up to 5 business days to post.

Payment will be sent to bank  
for processing on 01/07/23

**\$1,905.09**

**Amount Enclosed**

Eversource  
PO Box 56002  
Boston, MA 02205-6002

5152704807847 0001905094 0001905094



Account Number: **5152 704 8078**

Customer name key: WILT

Statement Date: 12/15/22

Service Provided To:  
WILTON PROPERTIES RSK LLC

**Svc Addr: 59 DANBURY RD  
WILTON CT 06897**

**Serv Ref: 412622000 Bill Cycle: 09**

**Service from 11/10/22 - 12/13/22 33 Days**

**Next read date on or about: Jan 13, 2023**

Meter Number	Current Read	Previous Read	Current Usage	Reading Type
892333192	12461	12391	70	Actual

Total Demand Use = 27.20 kW

70 X Meter Constant of 160 = 11,200 Billed Usage

#### Monthly kWh Use

Dec	Jan	Feb	Mar	Apr	May	Jun
10400	9600	9440	9600	8960	9280	9920
Jul	Aug	Sep	Oct	Nov	Dec	
10720	13440	11840	9760	9280	11200	

#### Contact Information

Emergency: 800-286-2000

www.eversource.com

Pay by Phone: 888-783-6618

Customer Service: 888-783-6617

Payment will be sent to bank  
for processing on 01/07/23

**\$1,905.09**

#### Electric Account Summary

Amount Due On 12/13/22	\$1,744.39
Last Payment Received On 12/08/22	-\$1,744.39
Balance Forward	\$0.00
Current Charges/Credits	
Electric Supply Services	\$1,015.84
Delivery Services	\$784.45
Other Charges or Credits	\$104.80
Total Current Charges	\$1,905.09
<b>Total Amount Due</b>	<b>\$1,905.09</b>

#### Total Charges for Electricity

#### Supplier

DIRECT ENERGY BUSINESS

Service Reference: 412622000

Generation Srvc Chrg\*\* 11200.00kWh X \$0.09070 \$1,015.84

Subtotal Supplier Services \$1,015.84

#### Delivery

(DISTRIBUTION RATE: 030)

Service Reference: 412622000

Transmission Dmd Chrg 25.20KW X \$9.36000 \$235.87

Distr Cust Srvc Chrg \$44.00

Distribution Dmd Chrg 25.20KW X \$14.22000 \$358.34

Electric Sys Improvements\*\*\* 25.20KW X \$1.86000 \$46.87

Revenue Adj Mechanism 11200.00kWh X \$0.00192 \$21.50

CTA Demand Chrg 25.20KW X \$-0.11000 -\$2.77

Comb Public Benefit Chrg\* 11200.00kWh X \$0.00720 \$80.64

Subtotal Delivery Services \$784.45

**Total Cost of Electricity \$1,800.29**

#### Other Charges or Credits

6.35% CT Sales Tax after Exemption of \$150.00

CE\_221215PROD.TXT

\*The Combined Public Benefits Charge represents a combination of three charges formerly known as: Conservation and Load Mgmt Charge, Renewable Energy Investment Charge, and Systems Benefits Charge. This charge also includes the Conservation Adjustment Mechanism approved by the Public Utilities Regulatory Authority in Docket No. 13-11-14.

\*\*Effective January 1, 2007, the Generation Services Charge (GSC) and the Bypassable Federally Mandated Congestion Charge (BFMCC) have been combined into the "GSC Charge" listed in the Supplier Services section of your bill. The GSC reflects all of the cost of procuring energy from Eversource wholesale suppliers. The BFMCC portion of this line item is -\$0.0014 / kWh. If you multiply this BFMCC rate by the number of kWhs on your bill, you can calculate the dollar amount associated with the BFMCC.

\*\*\*Electric System Improvements: Recovers company investments that protect, strengthen or modernize the electric grid.



Account Number: 5152 704 8078

Customer name key: WILT

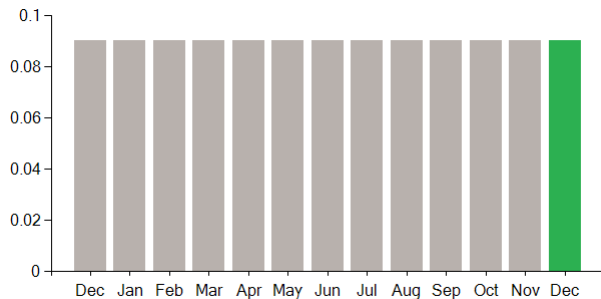
Statement Date: 12/15/22

Service Provided To:  
WILTON PROPERTIES RSK LLC

Continued from previous page...

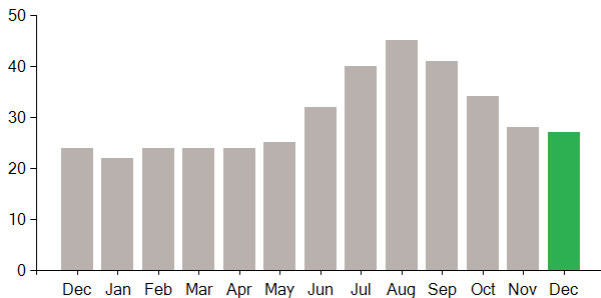
#### Supply Rate

Dollars / kWh



#### Demand Profile

Max. Demand



#### Important Messages About Your Account

Please note: Payment processes differ for each bank. Therefore, it may take longer than the date that appears on your bill for the funds to be deducted from your bank account.

Please note: Payment processes differ for each bank. Therefore, it may take longer than the date that appears on your bill for the funds to be deducted from your bank account.

Effective on or about 12/13/2022, your Energy provider will be:  
CONSTELLATION NEWENERGY C&I

Payment will be sent to bank  
for processing on 01/07/23

**\$1,905.09**

Continued from previous page...

CT Sales Tax Supplier	\$64.51
CT Sales Tax Delivery	\$40.29
Subtotal Other Charges or Credits	\$104.80

**Total Current Charges \$1,905.09**