



Account Number: **5152 704 8078**

Statement Date: 10/17/22

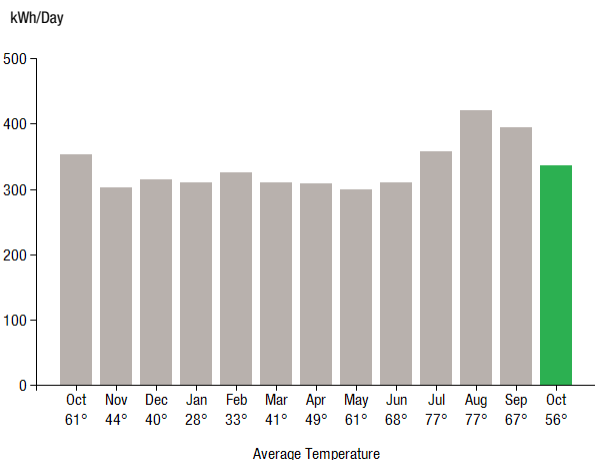
Service Provided To:  
WILTON PROPERTIES RSK LLC

Payment will be sent to bank  
for processing on 11/09/22

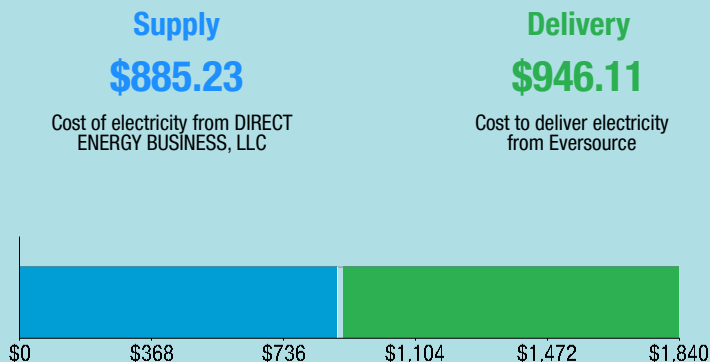
**\$1,938.10**

Amount Due On 10/14/22	\$2,426.90
Last Payment Received On 10/11/22	-\$2,426.90
Balance Forward	\$0.00
Total Current Charges	\$1,938.10

### Electric Usage History - Kilowatt Hours (kWh)



### Current Charges for Electricity



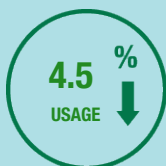
#### Your electric supplier is

DIRECT ENERGY BUSINESS, LLC  
1001 LIBERTY AVE  
PITTSBURGH PA 15222-3714  
888-925-9115

### Electric Usage Summary

This month your  
average daily  
electric use was  
**337.0 kWh**

This month you used  
**4.5% less**  
than at the  
same time last year



### News For You

Many Americans are facing challenging times, and no one wants to see rising energy bills. Right now, the increased cost of natural gas is having the largest impact on electric supply and overall energy bills, and that is likely to continue. Check out a quick video to help you to understand energy supply pricing and how you can manage your bill at [Eversource.com/price](https://www.eversource.com/price).

Remit Payment To: Eversource, PO Box 56002, Boston, MA 02205-6002

CE\_221017PROD.TXT



Account Number: **5152 704 8078**

Non-residential and residential non-hardship customers may be subject to a 1.00% late payment charge if the "Total Amount Due" is not received by 11/14/22.

WILTON PROPERTIES RSK LLC  
C/O NE INVESTMENT PARTNERS  
STE 2007  
470 WEST AVE  
STAMFORD CT 06902-6359

Please make your check payable to Eversource and consider adding \$1 for Operation Fuel.

To add more or make a payment today, visit [Eversource.com](https://www.eversource.com). If mailing, please allow up to 5 business days to post.

Payment will be sent to bank  
for processing on 11/09/22

**\$1,938.10**

**Amount Enclosed**

Eversource  
PO Box 56002  
Boston, MA 02205-6002

5152704807847 0001938102 0001938102



Account Number: **5152 704 8078**

Customer name key: WILT

Statement Date: 10/17/22

Service Provided To:  
WILTON PROPERTIES RSK LLC

Svc Addr: 59 DANBURY RD  
WILTON CT 06897

Serv Ref: 412622000

Bill Cycle: 09

Service from 09/14/22 - 10/13/22

29 Days

Next read date on or about: Nov 10, 2022

Meter Number	Current Read	Previous Read	Current Usage	Reading Type
892333192	12333	12272	61	Actual

Total Demand Use = 34.10 kW

61 X Meter Constant of 160 = 9,760 Billed Usage

#### Monthly kWh Use

Oct	Nov	Dec	Jan	Feb	Mar	Apr
10240	8480	10400	9600	9440	9600	8960
May	Jun	Jul	Aug	Sep	Oct	
9280	9920	10720	13440	11840	9760	

#### Contact Information

Emergency: 800-286-2000

www.eversource.com

Pay by Phone: 888-783-6618

Customer Service: 888-783-6617

Payment will be sent to bank  
for processing on 11/09/22

**\$1,938.10**

#### Electric Account Summary

Amount Due On 10/14/22	\$2,426.90
Last Payment Received On 10/11/22	-\$2,426.90
Balance Forward	\$0.00
Current Charges/Credits	
Electric Supply Services	\$885.23
Delivery Services	\$946.11
Other Charges or Credits	\$106.76
Total Current Charges	\$1,938.10
<b>Total Amount Due</b>	<b>\$1,938.10</b>

#### Total Charges for Electricity

#### Supplier

DIRECT ENERGY BUSINESS

Service Reference: 412622000

Generation Srvc Chrg\*\* 9760.00kWh X \$0.09070 \$885.23

Subtotal Supplier Services \$885.23

#### Delivery

(DISTRIBUTION RATE: 030)

Service Reference: 412622000

Transmission Dmd Chrg 32.10KW X \$9.36000 \$300.46

Distr Cust Srvc Chrg \$44.00

Distribution Dmd Chrg 32.10KW X \$14.22000 \$456.46

Electric Sys Improvements\*\*\* 32.10KW X \$1.86000 \$59.71

Revenue Adj Mechanism 9760.00kWh X \$0.00192 \$18.74

CTA Demand Chrg 32.10KW X \$-0.11000 -\$3.53

Comb Public Benefit Chrg\* 9760.00kWh X \$0.00720 \$70.27

Subtotal Delivery Services \$946.11

**Total Cost of Electricity \$1,831.34**

#### Other Charges or Credits

6.35% CT Sales Tax after Exemption of \$150.00

CE\_221017PROD.TXT

\*The Combined Public Benefits Charge represents a combination of three charges formerly known as: Conservation and Load Mgmt Charge, Renewable Energy Investment Charge, and Systems Benefits Charge. This charge also includes the Conservation Adjustment Mechanism approved by the Public Utilities Regulatory Authority in Docket No. 13-11-14.

\*\*Effective January 1, 2007, the Generation Services Charge (GSC) and the Bypassable Federally Mandated Congestion Charge (BFMCC) have been combined into the "GSC Charge" listed in the Supplier Services section of your bill. The GSC reflects all of the cost of procuring energy from Eversource wholesale suppliers. The BFMCC portion of this line item is -\$0.0014 / kWh. If you multiply this BFMCC rate by the number of kWhs on your bill, you can calculate the dollar amount associated with the BFMCC.

\*\*\*Electric System Improvements: Recovers company investments that protect, strengthen or modernize the electric grid.



Account Number: 5152 704 8078

Customer name key: WILT

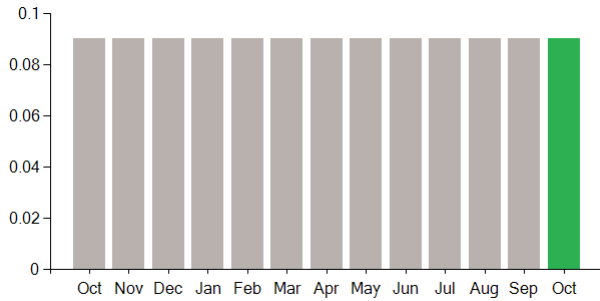
Statement Date: 10/17/22

Service Provided To:  
WILTON PROPERTIES RSK LLC

Continued from previous page...

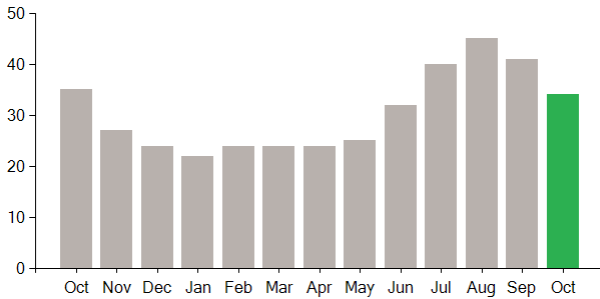
#### Supply Rate

Dollars / kWh



#### Demand Profile

Max. Demand



#### Important Messages About Your Account

Please note: Payment processes differ for each bank. Therefore, it may take longer than the date that appears on your bill for the funds to be deducted from your bank account.

Please note: Payment processes differ for each bank. Therefore, it may take longer than the date that appears on your bill for the funds to be deducted from your bank account.

Payment will be sent to bank  
for processing on 11/09/22

**\$1,938.10**

Continued from previous page...

CT Sales Tax Supplier	\$56.21
CT Sales Tax Delivery	\$50.55
Subtotal Other Charges or Credits	\$106.76

**Total Current Charges \$1,938.10**