

EVERSOURCE

Account Number: **5154 107 8077**

Statement Date: 09/16/21

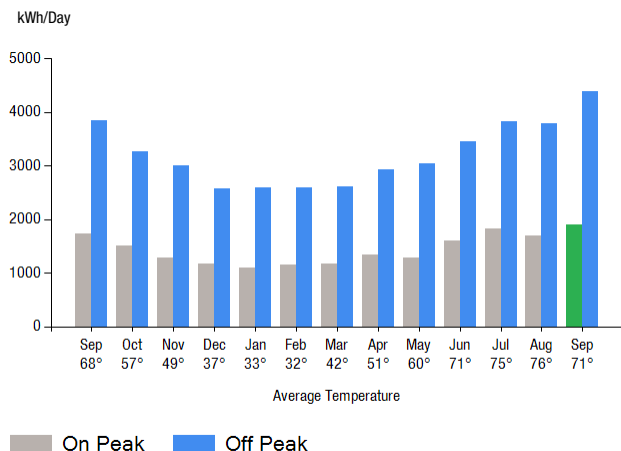
Service Provided To:
SUMMER STREET RSK LLC

Payment will be sent to bank
for processing on 10/09/21

\$29,773.66

| | |
|-----------------------------------|--------------|
| Amount Due On 09/14/21 | \$28,180.39 |
| Last Payment Received On 09/09/21 | -\$28,180.39 |
| Balance Forward | \$0.00 |
| Total Current Charges | \$29,773.66 |

Electric Usage History - Kilowatt Hours (kWh)



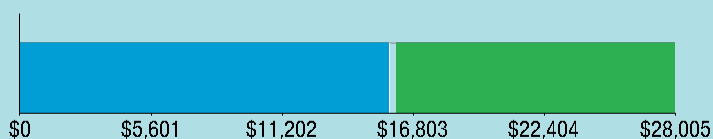
Current Charges for Electricity

Supply
\$15,789.17

Cost of electricity from ENGIE
RESOURCES

Delivery
\$12,207.30

Cost to deliver electricity
from Eversource



Your electric supplier is

ENGIE RESOURCES
O P O BOX 25237
LEHIGH VALLEY PA 18002-5237
WWW.ENGIRESOURCES.COM
888-232-6206

News For You

Beginning this month, you will receive a bill credit as a result of the performance penalty assessed by the Public Utilities Regulatory Authority related to Tropical Storm Isaias. This credit is based on usage and varies by customer rate. For the typical residential customer using 700 kWh of electricity a month, the credit is about \$1 per month and will be in effect for 12 billing cycles. See 'TS Isaias Performance Penalty' on page 2 of your bill.

Remit Payment To: Eversource, PO Box 56002, Boston, MA 02205-6002

CE_210916PROD.TXT

EVERSOURCE

Account Number: **5154 107 8077**

Please make your check payable to Eversource and consider adding \$1 for Operation Fuel.

To add more or make a payment today, visit Eversource.com. If mailing, please allow up to 5 business days to post.

Payment will be sent to bank
for processing on 10/09/21

\$29,773.66

Amount Enclosed

SUMMER STREET RSK LLC
C/O NEIP
STE 2007
470 WEST AVE
STAMFORD CT 06902-6359

Eversource
PO Box 56002
Boston, MA 02205-6002

5154107807745 0029773660 0029773660

EVERSOURCE

Account Number: **5154 107 8077**

Customer name key: SUMM

Statement Date: 09/16/21

Service Provided To:
SUMMER STREET RSK LLC

Svc Addr: 600 SUMMER ST
STAMFORD CT 06901

Serv Ref: 059481005 Bill Cycle: 11
Service from 08/17/21 - 09/16/21 30 Days
Next read date on or about: Oct 15, 2021

| Meter Number | Current Read | Previous Read | Current Usage | Reading Type |
|--------------|--------------|---------------|---------------|--------------|
| 890965412 | 5660 | 5581 | 79 | On Peak |
| 890965412 | 13016 | 12833 | 183 | Off Peak |

Total Demand Use = 446.40 kW

79 X Meter Constant of 720 = 56880 Billed Usage

183 X Meter Constant of 720 = 131760 Billed Usage

Max Off-Peak Demand: 446.4 kW

Max On-Peak Demand: 393.8 kW

Max Off-Peak Demand: 512.6 kVA

Max On-Peak Demand: 442.8 kVA

Monthly kWh Use - On Peak

| Sep | Oct | Nov | Dec | Jan | Feb | Mar |
|-------|-------|-------|-------|-------|-------|-------|
| 51840 | 45360 | 39600 | 35280 | 36000 | 33120 | 33840 |
| Apr | May | Jun | Jul | Aug | Sep | |
| 40320 | 39600 | 48240 | 54720 | 54000 | 56880 | |

Monthly kWh Use - Off Peak

| Sep | Oct | Nov | Dec | Jan | Feb | Mar |
|--------|-------|--------|--------|--------|--------|-------|
| 115200 | 97920 | 92880 | 77040 | 85680 | 74880 | 75600 |
| Apr | May | Jun | Jul | Aug | Sep | |
| 87840 | 94320 | 103680 | 114480 | 120960 | 131760 | |

Payment will be sent to bank
for processing on 10/09/21

\$29,773.66

Electric Account Summary

| | |
|-----------------------------------|--------------------|
| Amount Due On 09/14/21 | \$28,180.39 |
| Last Payment Received On 09/09/21 | -\$28,180.39 |
| Balance Forward | \$0.00 |
| Current Charges/Credits | |
| Electric Supply Services | \$15,789.17 |
| Delivery Services | \$12,207.30 |
| Other Charges or Credits | \$1,777.19 |
| Total Current Charges | \$29,773.66 |
| Total Amount Due | \$29,773.66 |

Total Charges for Electricity

Supplier

ENGIE RESOURCES, INC

Service Reference: 059481005

| | | |
|----------------------------|--------------------------|-------------|
| Generation Srvc Chrg** | 188640.00kWh X \$0.08370 | \$15,789.17 |
| Subtotal Supplier Services | | \$15,789.17 |

Delivery

(DISTRIBUTION RATE: 056)

Service Reference: 059481005

| | | |
|----------------------------------|---------------------------|--------------------|
| Prod/Trans Dmd Chrg | 442.80KVA X \$9.20000 | \$4,073.76 |
| Distr Cust Srvc Chrg | | \$350.00 |
| Distribution Dmd Chrg | 514.80KVA X \$7.91000 | \$4,072.07 |
| Electric Sys Improvements*** | 514.80KVA X \$0.53000 | \$272.84 |
| TS Isaias Performance Penalty | 100608.00kWh X \$-0.00140 | -\$140.85 |
| Prod/Trans CTA Dmd Chrg | 442.80KVA X \$-0.43000 | -\$190.40 |
| FMCC Delivery Chrg On-Pk | 56880.00kWh X \$0.02902 | \$1,650.66 |
| FMCC Delivery Chrg Off-Pk | 131760.00kWh X \$0.00642 | \$845.90 |
| Combined PBC - On-Pk* | 56880.00kWh X \$0.00675 | \$383.94 |
| Combined PBC - Off-Pk* | 131760.00kWh X \$0.00675 | \$889.38 |
| Subtotal Delivery Services | | \$12,207.30 |
| Total Cost of Electricity | | \$27,996.47 |

CE_210916PROD.TXT

Explanation of your charges

*The Combined Public Benefits Charge represents a combination of three charges formerly known as: Conservation and Load Mgmt Charge, Renewable Energy Investment Charge, and Systems Benefits Charge. This charge also includes the Conservation Adjustment Mechanism approved by the Public Utilities Regulatory Authority in Docket No. 13-11-14.

**Effective January 1, 2007, the Generation Services Charge (GSC) and the Bypassable Federally Mandated Congestion Charge (BFMCC) have been combined into the "GSC Charge" listed in the Supplier Services section of your bill. The GSC reflects all of the cost of procuring energy from Eversource wholesale suppliers. The BFMCC portion of this line item is -\$0.0008 / kWh. If you multiply this BFMCC rate by the number of kWhs on your bill, you can calculate the dollar amount associated with the BFMCC.

***Electric System Improvements: Recovers company investments that protect, strengthen or modernize the electric grid.



Account Number: 5154 107 8077

Customer name key: SUMM

Statement Date: 09/16/21

Service Provided To:
SUMMER STREET RSK LLC

Continued from previous page...

Contact Information

Emergency: 800-286-2000

www.eversource.com

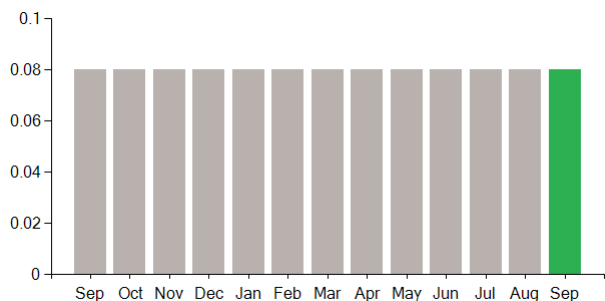
BusinessCenterCT@eversource.com

Pay by Phone: 888-783-6618

Customer Service: 888-783-6617

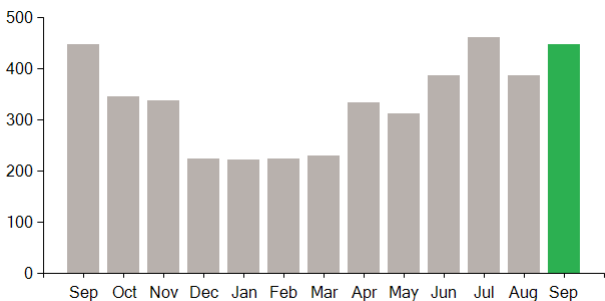
Supply Rate

Dollars / kWh



Demand Profile

Max. Demand



Important Messages About Your Account

Please note: Payment processes differ for each bank. Therefore, it may take longer than the date that appears on your bill for the funds to be deducted from your bank account.

Because the billing period spans a change in the rates, your usage has been calculated partly on the old rate and partly on the new rate.

Distribution Demand based on ratchet

Max KW vs Max KVA Ratio = $393.800/442.800=0.890$

Payment will be sent to bank
for processing on 10/09/21

\$29,773.66

Continued from previous page...

Other Charges or Credits

6.35% CT Sales Tax after Exemption of \$150.00

CT Sales Tax Supplier \$1,002.61

CT Sales Tax Delivery \$774.58

Subtotal Other Charges or Credits \$1,777.19

Total Current Charges

\$29,773.66



Account Number: **5154 107 8077**

Customer name key: SUMM

Statement Date: 09/16/21

Service Provided To:
SUMMER STREET RSK LLC

Payment will be sent to bank
for processing on 10/09/21

\$29,773.66

Continued from previous page...

Power Factor at Max KVA = $392.400/442.800=0.890$