

EVERSOURCE

Account Number: **5152 704 8078**

Statement Date: 08/16/22

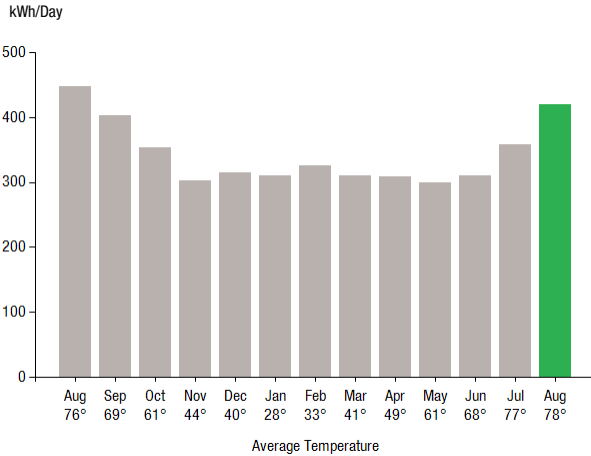
Service Provided To:
WILTON PROPERTIES RSK LLC

Payment will be sent to bank
for processing on 09/08/22

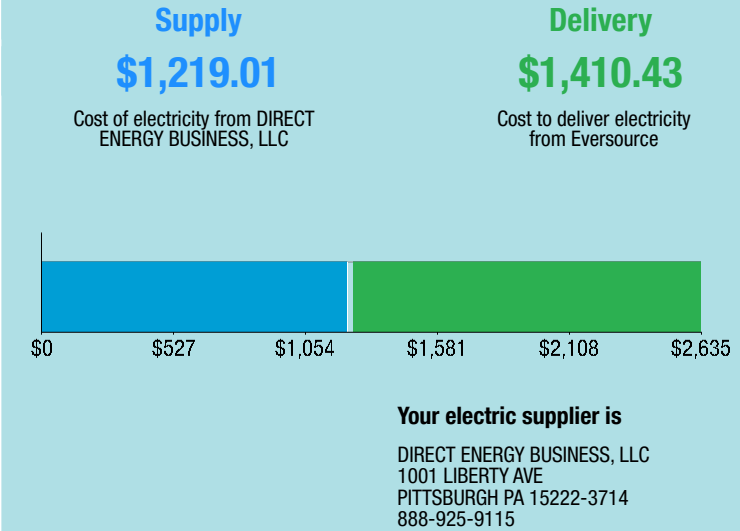
\$2,788.08

Amount Due On 08/11/22	\$2,304.16
Last Payment Received On 08/08/22	-\$2,304.16
Balance Forward	\$0.00
Total Current Charges	\$2,788.08

Electric Usage History - Kilowatt Hours (kWh)



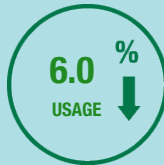
Current Charges for Electricity



Electric Usage Summary

This month your
average daily
electric use was
420.0 kWh

This month you used
6.0% less
than at the
same time last year



News For You

Global spikes in the price of natural gas, which is often used to generate electricity, are driving the cost of energy to be higher across the country. Cost increases combined with using more energy to keep cool in the summer, means your bill will be higher than normal. Take advantage of our Cooling Calculator to see how small adjustments in your thermostat can make a big impact in lowering your electric bill at Eversource.com/cooling-calc.

Remit Payment To: Eversource, PO Box 56002, Boston, MA 02205-6002

CE_220816PROD.TXT

EVERSOURCE

Account Number: **5152 704 8078**

Non-residential and residential non-hardship customers may be subject to a 1.00% late payment charge if the "Total Amount Due" is not received by 09/13/22.

WILTON PROPERTIES RSK LLC
C/O NE INVESTMENT PARTNERS
STE 2007
470 WEST AVE
STAMFORD CT 06902-6359

Please make your check payable to Eversource and consider adding \$1 for Operation Fuel.

To add more or make a payment today, visit Eversource.com. If mailing, please allow up to 5 business days to post.

Payment will be sent to bank
for processing on 09/08/22

\$2,788.08

Amount Enclosed

Eversource
PO Box 56002
Boston, MA 02205-6002

5152704807847 0002788083 0002788083



Account Number: **5152 704 8078**

Customer name key: WILT

Statement Date: 08/16/22

Service Provided To:
WILTON PROPERTIES RSK LLC

Svc Addr: 59 DANBURY RD
WILTON CT 06897

Serv Ref: 412622000

Bill Cycle: 09

Service from 07/14/22 - 08/15/22

32 Days

Next read date on or about: Sep 14, 2022

Meter Number	Current Read	Previous Read	Current Usage	Reading Type
892333192	12198	12114	84	Actual

Total Demand Use = 45.30 kW

84 X Meter Constant of 160 = 13,440 Billed Usage

Monthly kWh Use

Aug	Sep	Oct	Nov	Dec	Jan	Feb
12960	13280	10240	8480	10400	9600	9440
Mar	Apr	May	Jun	Jul	Aug	
9600	8960	9280	9920	10720	13440	

Contact Information

Emergency: 800-286-2000

www.eversource.com

Pay by Phone: 888-783-6618

Customer Service: 888-783-6617

Payment will be sent to bank
for processing on 09/08/22

\$2,788.08

Electric Account Summary

Amount Due On 08/11/22	\$2,304.16
Last Payment Received On 08/08/22	-\$2,304.16
Balance Forward	\$0.00
Current Charges/Credits	
Electric Supply Services	\$1,219.01
Delivery Services	\$1,410.43
Other Charges or Credits	\$158.64
Total Current Charges	\$2,788.08
Total Amount Due	\$2,788.08

Total Charges for Electricity

Supplier

DIRECT ENERGY BUSINESS

Service Reference: 412622000

Generation Srvc Chrg**	13440.00kWh X \$0.09070	\$1,219.01
Subtotal Supplier Services		\$1,219.01

Delivery

(DISTRIBUTION RATE: 030)

Service Reference: 412622000

Transmission Dmd Chrg	43.30KW X \$9.36000	\$405.29
Distr Cust Srvc Chrg		\$44.00
Distribution Dmd Chrg	43.30KW X \$14.22000	\$615.73
Electric Sys Improvements***	43.30KW X \$1.87000	\$80.97
Revenue Adj Mechanism	13440.00kWh X \$0.00192	\$25.80
TS Isaias Performance Penalty	13440.00kWh X \$-0.00140	-\$18.82
CTA Demand Chrg	43.30KW X \$-0.11000	-\$4.76
FMCC Delivery Chrg	13440.00kWh X \$0.01231	\$165.45
Comb Public Benefit Chrg*	13440.00kWh X \$0.00720	\$96.77
Subtotal Delivery Services		\$1,410.43
Total Cost of Electricity		\$2,629.44

CE_220816PROD.TXT

*The Combined Public Benefits Charge represents a combination of three charges formerly known as: Conservation and Load Mgmt Charge, Renewable Energy Investment Charge, and Systems Benefits Charge. This charge also includes the Conservation Adjustment Mechanism approved by the Public Utilities Regulatory Authority in Docket No. 13-11-14.

**Effective January 1, 2007, the Generation Services Charge (GSC) and the Bypassable Federally Mandated Congestion Charge (BFMCC) have been combined into the "GSC Charge" listed in the Supplier Services section of your bill. The GSC reflects all of the cost of procuring energy from Eversource wholesale suppliers. The BFMCC portion of this line item is -\$0.0014 / kWh. If you multiply this BFMCC rate by the number of kWhs on your bill, you can calculate the dollar amount associated with the BFMCC.

***Electric System Improvements: Recovers company investments that protect, strengthen or modernize the electric grid.



Account Number: 5152 704 8078

Customer name key: WILT

Statement Date: 08/16/22

Service Provided To:
WILTON PROPERTIES RSK LLC

Payment will be sent to bank
for processing on 09/08/22

\$2,788.08

Continued from previous page...

Other Charges or Credits

6.35% CT Sales Tax after Exemption of \$150.00

CT Sales Tax Supplier \$77.41

CT Sales Tax Delivery \$81.23

Subtotal Other Charges or Credits \$158.64

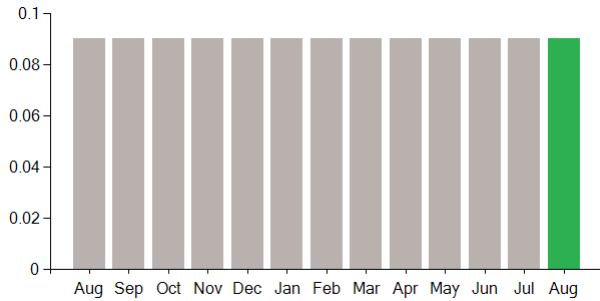
Total Current Charges

\$2,788.08

Continued from previous page...

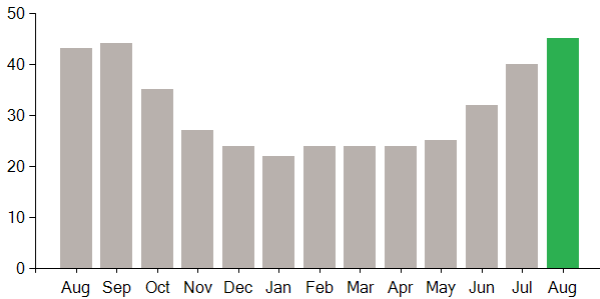
Supply Rate

Dollars / kWh



Demand Profile

Max. Demand



Important Messages About Your Account

Please note: Payment processes differ for each bank. Therefore, it may take longer than the date that appears on your bill for the funds to be deducted from your bank account.

Please note: Payment processes differ for each bank. Therefore, it may take longer than the date that appears on your bill for the funds to be deducted from your bank account.