



Account Number: **5152 704 8078**

Statement Date: 06/16/22

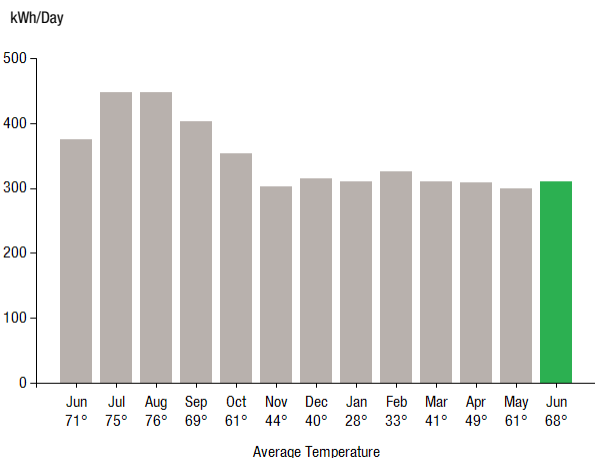
Service Provided To:
WILTON PROPERTIES RSK LLC

Payment will be sent to bank
for processing on 07/09/22

\$2,012.00

Amount Due On 06/10/22	\$1,735.53
Last Payment Received On 06/06/22	-\$1,735.53
Balance Forward	\$0.00
Total Current Charges	\$2,012.00

Electric Usage History - Kilowatt Hours (kWh)



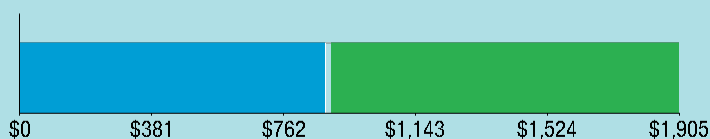
Current Charges for Electricity

Supply
\$881.89

Cost of electricity from DIRECT
ENERGY BUSINESS, LLC

Delivery
\$1,018.10

Cost to deliver electricity
from Eversource



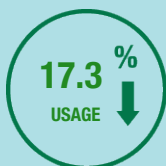
Your electric supplier is

DIRECT ENERGY BUSINESS, LLC
1001 LIBERTY AVE
PITTSBURGH PA 15222-3714
888-925-9115

Electric Usage Summary

This month your
average daily
electric use was
310.0 kWh

This month you used
17.3% less
than at the
same time last year



News For You

Several line items make up your bill, but they really fall into four categories – all of which are driven by the amount of electricity you use. These categories are supply; transmission; distribution, operations, and service; and public policy. Learn more about what these are and what you're paying for and take advantage of programs to set a fixed monthly payment amount, help lower or pay your bill at [Eversource.com/understand-my-bill](https://www.eversource.com/understand-my-bill).

Remit Payment To: Eversource, PO Box 56002, Boston, MA 02205-6002

CE_220616PROD.TXT



Account Number: **5152 704 8078**

Non-residential customers may be subject to a 1.00% late payment charge if the "Total Amount Due" is not received by 07/14/22.

Please make your check payable to Eversource and consider adding \$1 for Operation Fuel.

To add more or make a payment today, visit [Eversource.com](https://www.eversource.com). If mailing, please allow up to 5 business days to post.

Payment will be sent to bank
for processing on 07/09/22

\$2,012.00

Amount Enclosed

WILTON PROPERTIES RSK LLC
C/O NE INVESTMENT PARTNERS
STE 2007
470 WEST AVE
STAMFORD CT 06902-6359

Eversource
PO Box 56002
Boston, MA 02205-6002

5152704807847 0002012005 0002012005

EVERSOURCE

Account Number: **5152 704 8078**

Customer name key: WILT

Statement Date: 06/16/22

Service Provided To:
WILTON PROPERTIES RSK LLC

Svc Addr: 59 DANBURY RD
WILTON CT 06897

Serv Ref: 412622000

Bill Cycle: 09

Service from 05/13/22 - 06/14/22

32 Days

Next read date on or about: Jul 14, 2022

Meter Number	Current Read	Previous Read	Current Usage	Reading Type
892333192	12047	11985	62	Actual

Total Demand Use = 32.60 kW

62 X Meter Constant of 160 = 9,920 Billed Usage

Monthly kWh Use

Jun	Jul	Aug	Sep	Oct	Nov	Dec
12000	13440	12960	13280	10240	8480	10400
Jan	Feb	Mar	Apr	May	Jun	
9600	9440	9600	8960	9280	9920	

Contact Information

Emergency: 800-286-2000

www.eversource.com

Pay by Phone: 888-783-6618

Customer Service: 888-783-6617

Payment will be sent to bank
for processing on 07/09/22

\$2,012.00

Electric Account Summary

Amount Due On 06/10/22	\$1,735.53
Last Payment Received On 06/06/22	-\$1,735.53
Balance Forward	\$0.00
Current Charges/Credits	
Electric Supply Services	\$881.89
Delivery Services	\$1,018.10
Other Charges or Credits	\$112.01
Total Current Charges	\$2,012.00
Total Amount Due	\$2,012.00

Total Charges for Electricity

Supplier

DIRECT ENERGY BUSINESS

Service Reference: 412622000

Generation Srvc Chrg** 9920.00kWh X \$0.08890 \$881.89

Subtotal Supplier Services \$881.89

Delivery

(DISTRIBUTION RATE: 030)

Service Reference: 412622000

Transmission Dmd Chrg 30.60KW X \$9.36000 \$286.42

Distr Cust Srvc Chrg \$44.00

Distribution Dmd Chrg 30.60KW X \$14.22000 \$435.13

Electric Sys Improvements*** 30.60KW X \$1.87000 \$57.22

Revenue Adj Mechanism 9920.00kWh X \$0.00192 \$19.05

TS Isaias Performance Penalty 9920.00kWh X \$-0.00140 -\$13.89

CTA Demand Chrg 30.60KW X \$-0.11000 -\$3.37

FMCC Delivery Chrg 9920.00kWh X \$0.01231 \$122.12

Comb Public Benefit Chrg* 9920.00kWh X \$0.00720 \$71.42

Subtotal Delivery Services \$1,018.10

Total Cost of Electricity \$1,899.99

CE_220616PROD.TXT

Explanation of your charges

*The Combined Public Benefits Charge represents a combination of three charges formerly known as: Conservation and Load Mgmt Charge, Renewable Energy Investment Charge, and Systems Benefits Charge. This charge also includes the Conservation Adjustment Mechanism approved by the Public Utilities Regulatory Authority in Docket No. 13-11-14.

**Effective January 1, 2007, the Generation Services Charge (GSC) and the Bypassable Federally Mandated Congestion Charge (BFMCC) have been combined into the "GSC Charge" listed in the Supplier Services section of your bill. The GSC reflects all of the cost of procuring energy from Eversource wholesale suppliers. The BFMCC portion of this line item is -\$0.0009 / kWh. If you multiply this BFMCC rate by the number of kWhs on your bill, you can calculate the dollar amount associated with the BFMCC.

***Electric System Improvements: Recovers company investments that protect, strengthen or modernize the electric grid.



Account Number: 5152 704 8078

Customer name key: WILT

Statement Date: 06/16/22

Service Provided To:
WILTON PROPERTIES RSK LLC

Payment will be sent to bank
for processing on 07/09/22

\$2,012.00

Continued from previous page...

Other Charges or Credits

6.35% CT Sales Tax after Exemption of \$150.00

CT Sales Tax Supplier \$56.00

CT Sales Tax Delivery \$56.01

Subtotal Other Charges or Credits \$112.01

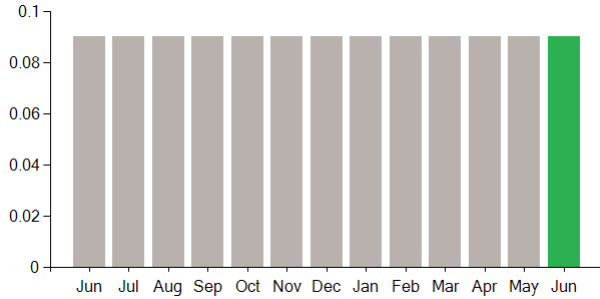
Total Current Charges

\$2,012.00

Continued from previous page...

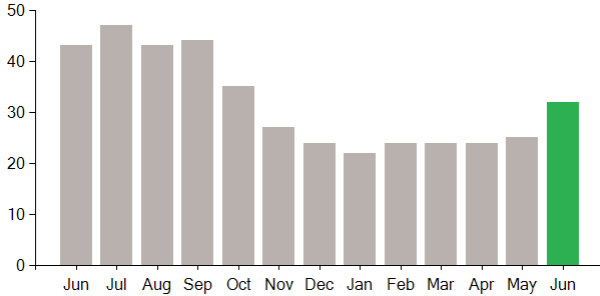
Supply Rate

Dollars / kWh



Demand Profile

Max. Demand



Important Messages About Your Account

Please note: Payment processes differ for each bank. Therefore, it may take longer than the date that appears on your bill for the funds to be deducted from your bank account.